

ELECTRONIC EXHAUST CONTROLLER II

INSTRUCTION MANUAL



ver.0.0.1

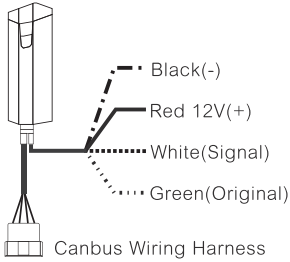
FUNCTION DESCRIPTION

This product enables the vehicle owner to turn on or off the electronic exhaust valve/ solenoid valve to adjust the vehicle performance as he wishes.

PRODUCT FEATURES

- Easy installation.
- Bluetooth connection which can remote control by mobile devices.
- Memorize the state before power off.
- Stable performance.
- The mode can be switched quickly to increase driving pleasure and make it hard to let go.

INSTALLATION INSTRUCTION

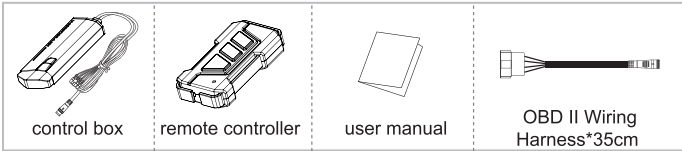


The wiring method is divided into 2 types due to different corresponding styles:

1. 3 PIN/4 PIN factory adapter style : suitable for vehicles which is equipped with factory electronic exhaust valves.
2. Aftermarket OEM electronic exhaust valve style: Suitable for modified cars that selected 3 PIN/4 PIN electronic valves.

GENERAL CONTENT

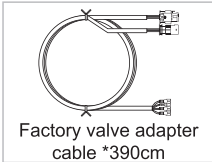
The following pictures are for reference only. They may not be the same as the real object.



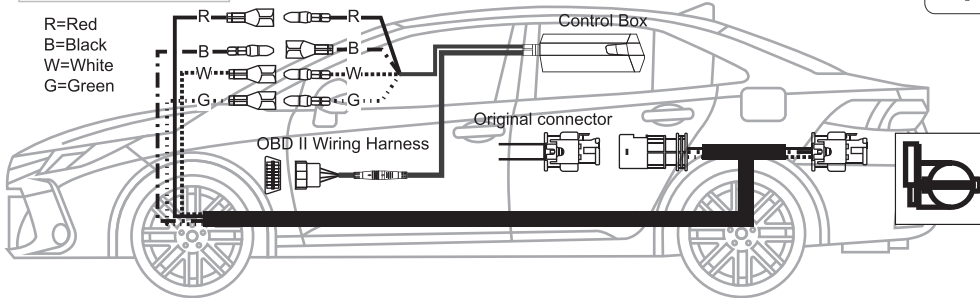
There are two different connect way.

OEM valve use dedicated harness. (Need to check the exhaust valve motor and harness.) Different part number has different accessories. Please confirm the connector and model before you purchase.

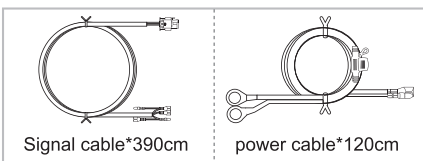
OPTIONAL CONTENT



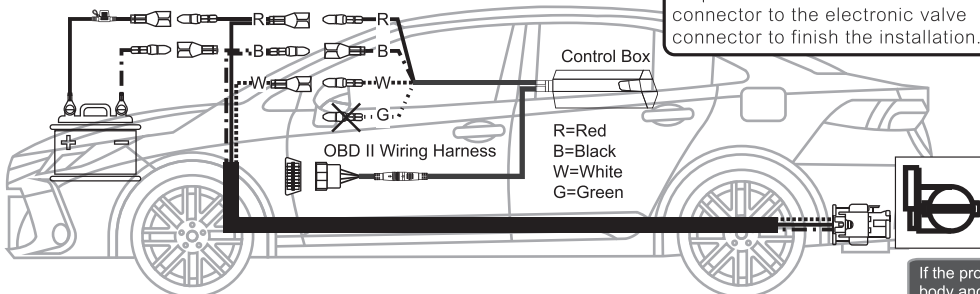
Factory adapter style
Only need to connect the factory connector adapter cables mutually and follow the wire color on the control box then the installation is finished.



AFTERMARKET VALVE CONTENTS

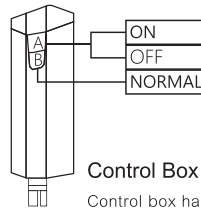


Aftermarket electronic exhaust valve style
Step1: Complete the control box power configuration.
Step2: Finish the control box electricity distribution.
Step3: Connect the dedicated wire connector to the electronic valve connector to finish the installation.

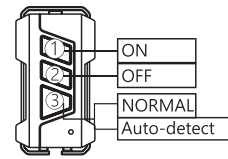


To control two electronic valves at the same time, just assign power and signal to both valves and it will work.

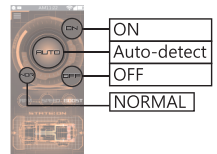
OPERATION INSTRUCTION



Control box has two buttons:
Button A: Manual Control ON/OFF
Button B: Switch back to Normal mode.

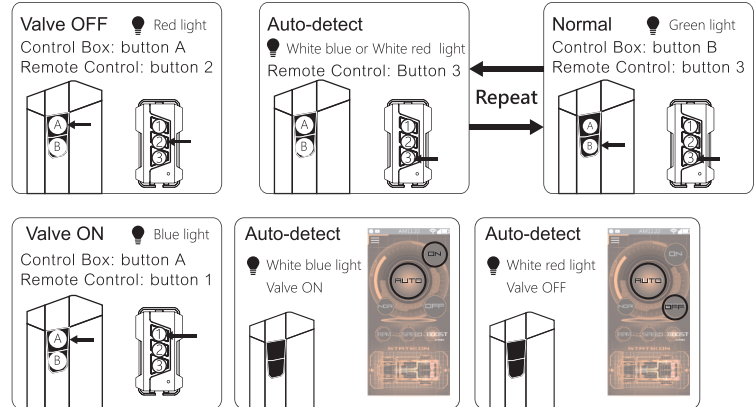


Remote control has three buttons:
① Button 1: ON
② Button 2: OFF
③ Button 3: Normal mode
Press again for the Auto-detect mode. It will repeat the cycle.



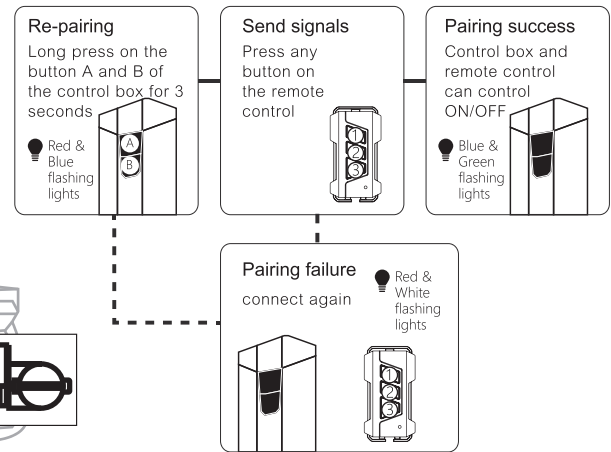
Tap the center of the screen to use Bluetooth in the application to control ON/OFF. Auto-detect and Normal mode.

(Button "B" , "③" and "NOR" are not available for aftermarket valve .)



The white light flashing is to remind the user that the OBD II wiring harness is disconnected or removed.

Remote control pairing



If the product needs repairing or claiming warranty, please collect the main body and all accessories and bring them back to the place that you buy this device.